



BROADWAY PLAZA SHOPPING CENTER

Across from Oak Park Mall | Retail Space For Lease
Quivira Rd. at 97th St., Lenexa, KS | A Kansas City Suburb



\$16-21/SF NNN | 1,100 SF - 6,700 SF AVAILABLE

DEMOGRAPHICS

Radius Ring	1 mile	3 miles	5 miles
Estimated Population	11,699	100,828	247,235
Avg. Household Income	\$116,536	\$112,129	\$125,010

DEMOGRAPHICS

Drive Time	5 minute	10 minute	15 minute
Estimated Population	29,173	149,835	336,127
Avg. Household Income	\$114,346	\$116,208	\$128,187

- 1,464 SF end cap retail space, 1,100 SF and 6,700 SF in-line retail space, and up to 4,600 SF of office space for lease
- Proposed Pad Site Available with up to 4,000 SF Building
- Prime location across from Oak Park Mall - Kansas City's #1 Mall
- Great access and visibility, strong demographic profile
- Area tenants include Target, Nordstrom, Macy's, new TJ Maxx and Home Goods, Nordstrom Rack and many more
- Excellent exposure to traffic counts on Quivira Road which carries over 27,000 cars per day
- Space compatible with retail, office, or service



CLICK HERE TO VIEW MORE LISTING INFORMATION

For More Information Contact:

SLAYDE JENNERWEIN | 816.412.7388 | sjennerwein@blockandco.com
COLTIN DIEHL | 816.412.7339 | cdiehl@blockandco.com
MAX KOSOGLAD | 816.412.7363 | mkosoglad@blockandco.com

Exclusive Agents



SITE PLAN



#	Name	SF	Address
1	DXL Mens Apparel	7,618 SF	9702 Quivira Road
2	Palacio Maya Mexican Restaurant	6,000 SF	9720 Quivira Road
3	Kansas Sampler	38,200 SF	9750 Quivira Road
4	Hopps Catering	6,004 SF	9764 Quivira Road
5	AVAILABLE	1,100 SF	9768 Quivira Road
6	AVAILABLE	1,464 SF	9770 Quivira Road
7	AVAILABLE	3,403 SF	9772 Quivira Road
8	AVAILABLE	6,700 SF	9800 Quivira Road
9	Midway Liquor	2,950 SF	9806 Quivira Road
10	AVAILABLE	2,300 SF	9860 Quivira Road
11	AVAILABLE	2,300 SF	9864 Quivira Road



BROADWAY PLAZA SHOPPING CENTER

Across from Oak Park Mall | Retail Space For Lease
97th St. & Quivira Rd., Lenexa, KS | A Kansas City Suburb

DRONE PHOTO



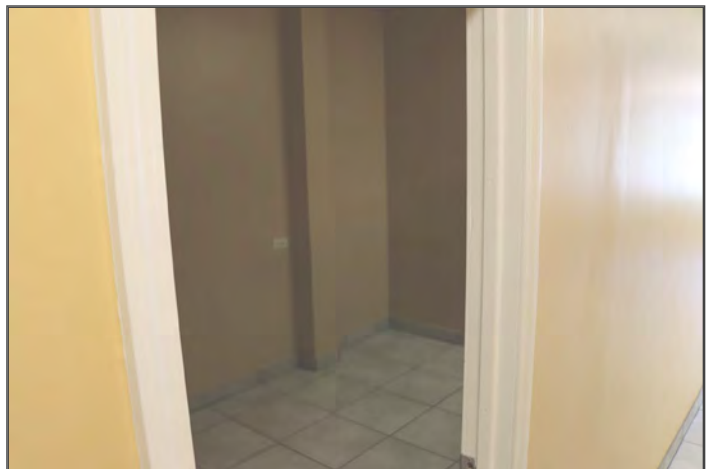
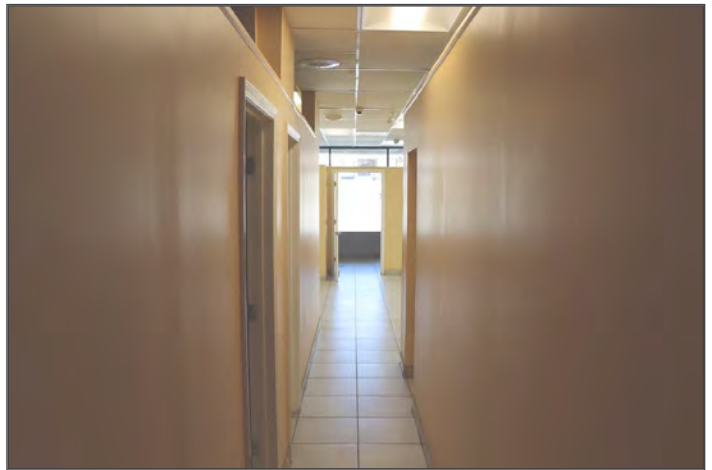


BROADWAY PLAZA SHOPPING CENTER

Across from Oak Park Mall | Retail Space For Lease

97th St. & Quivira Rd., Lenexa, KS | A Kansas City Suburb

SPACE 5 PHOTOS



SPACE 6 PHOTOS



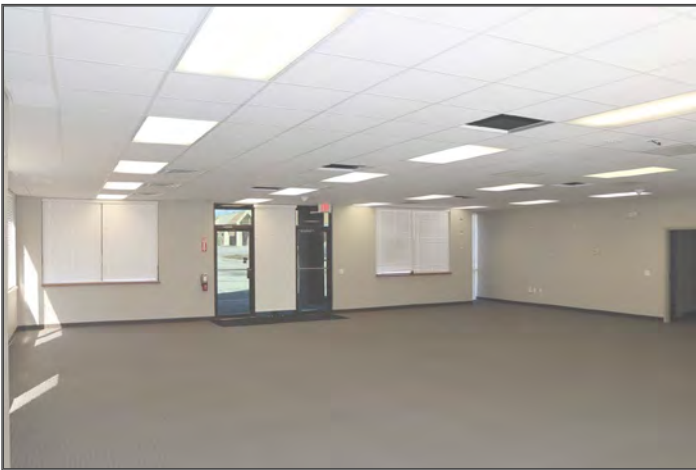


BROADWAY PLAZA SHOPPING CENTER

Across from Oak Park Mall | Retail Space For Lease

97th St. & Quivira Rd., Lenexa, KS | A Kansas City Suburb

SPACE 10 & 11 PHOTOS





BROADWAY PLAZA SHOPPING CENTER

Across from Oak Park Mall | Retail Space For Lease
97th St. & Quivira Rd., Lenexa, KS | A Kansas City Suburb

AERIAL



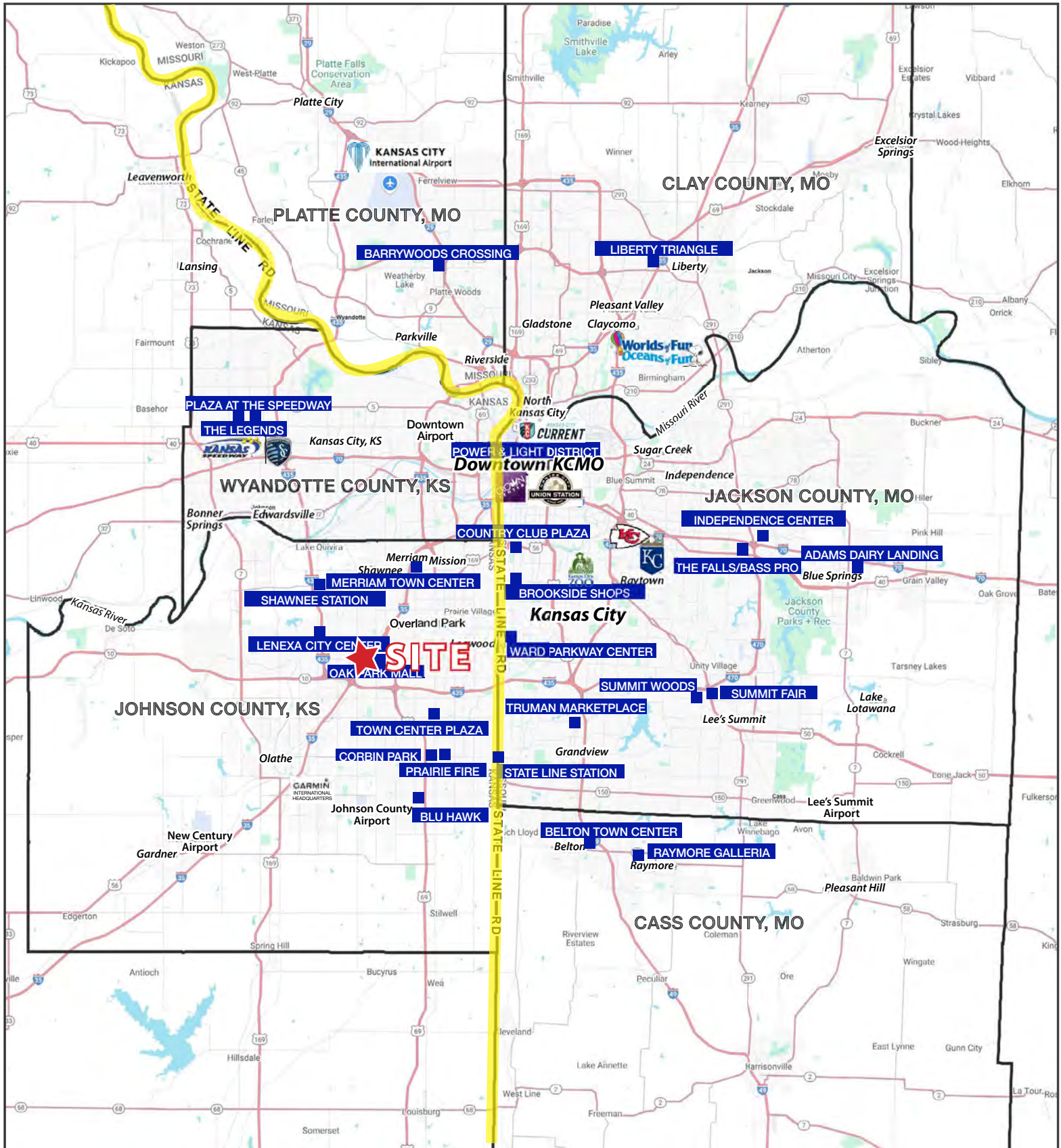
All information furnished regarding property for sale or lease is from sources deemed reliable, but no warranty or representation is made as to the accuracy thereof and the same is subject to errors, omissions, changes of prices, rental or other conditions, prior sale or lease or withdrawal without notice.



BROADWAY PLAZA SHOPPING CENTER

Across from Oak Park Mall | Retail Space For Lease

97th St. & Quivira Rd., Lenexa, KS | A Kansas City Suburb

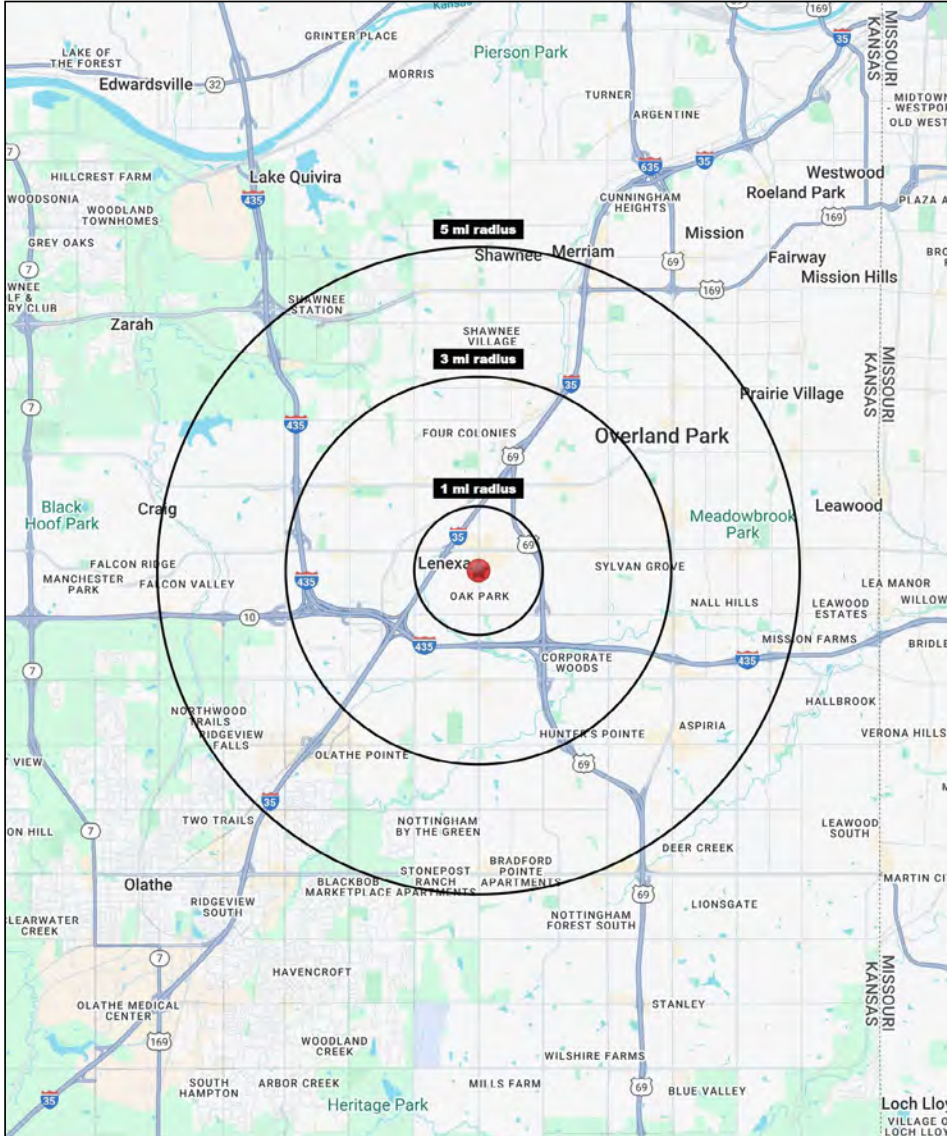




BROADWAY PLAZA SHOPPING CENTER

Across from Oak Park Mall | Retail Space For Lease
97th St. & Quivira Rd., Lenexa, KS | A Kansas City Suburb

1-3-5 MILE RADIUS RING MAP & DEMOS



97th Street & Quivira Road Lenexa, KS 66215	1 mi radius	3 mi radius	5 mi radius
Population			
2024 Estimated Population	11,699	100,828	247,235
2029 Projected Population	11,579	102,874	254,821
2020 Census Population	11,400	96,887	240,834
2010 Census Population	11,415	94,138	224,174
Projected Annual Growth 2024 to 2029	-0.2%	0.4%	0.6%
Historical Annual Growth 2010 to 2024	0.2%	0.5%	0.7%
2024 Median Age	37.3	38.3	38.7
Households			
2024 Estimated Households	4,769	45,634	110,708
2029 Projected Households	4,769	47,145	115,499
2020 Census Households	4,732	43,484	103,961
2010 Census Households	4,629	41,055	95,048
Projected Annual Growth 2024 to 2029	-	0.7%	0.9%
Historical Annual Growth 2010 to 2024	0.2%	0.8%	1.2%
Race and Ethnicity			
2024 Estimated White	75.5%	77.1%	78.4%
2024 Estimated Black or African American	8.4%	7.9%	6.8%
2024 Estimated Asian or Pacific Islander	4.1%	4.3%	5.4%
2024 Estimated American Indian or Native Alaskan	0.4%	0.3%	0.3%
2024 Estimated Other Races	11.6%	10.3%	9.1%
2024 Estimated Hispanic	12.5%	10.5%	9.2%
Income			
2024 Estimated Average Household Income	\$116,536	\$112,129	\$125,010
2024 Estimated Median Household Income	\$89,699	\$90,920	\$98,266
2024 Estimated Per Capita Income	\$47,752	\$50,852	\$56,106
Education (Age 25+)			
2024 Estimated Elementary (Grade Level 0 to 8)	1.5%	1.9%	1.5%
2024 Estimated Some High School (Grade Level 9 to 11)	2.4%	1.9%	1.9%
2024 Estimated High School Graduate	20.4%	15.0%	14.5%
2024 Estimated Some College	16.5%	20.1%	18.7%
2024 Estimated Associates Degree Only	8.1%	8.4%	7.8%
2024 Estimated Bachelors Degree Only	35.5%	33.8%	34.3%
2024 Estimated Graduate Degree	15.4%	18.9%	21.3%
Business			
2024 Estimated Total Businesses	630	5,784	12,221
2024 Estimated Total Employees	10,966	104,232	205,730
2024 Estimated Employee Population per Business	17.4	18.0	16.8
2024 Estimated Residential Population per Business	18.6	17.4	20.2

©2024, Sites USA, Chandler, Arizona, 480-491-1112 Demographic Source: Applied Geographic Solutions 5/2024, TIGER Geography - RS1

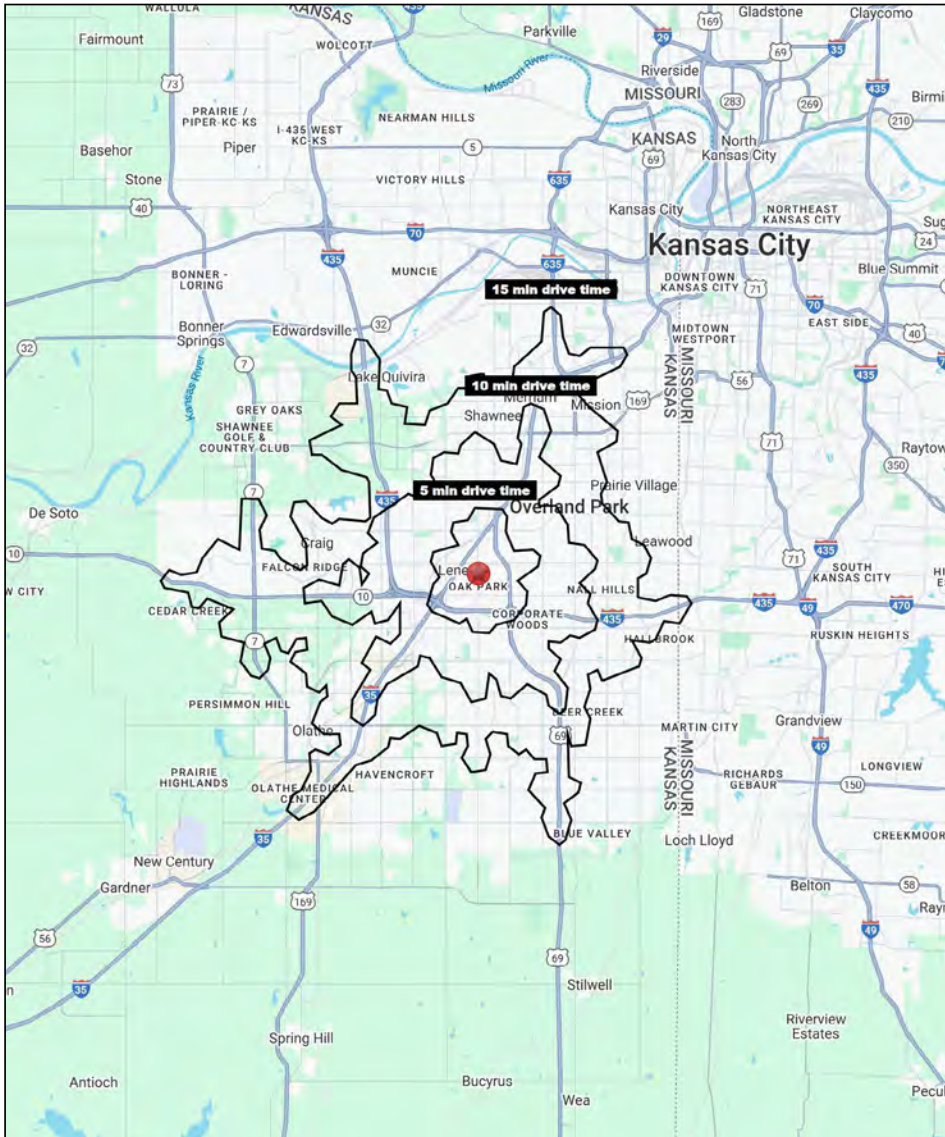




BROADWAY PLAZA SHOPPING CENTER

Across from Oak Park Mall | Retail Space For Lease
97th St. & Quivira Rd., Lenexa, KS | A Kansas City Suburb

5-10-15 MINUTE DRIVE TIME MAP & DEMOS



97th Street & Quivira Road Lenexa, KS 66215	5 min drive time	10 min drive time	15 min drive time
Population			
2024 Estimated Population	29,173	149,835	336,127
2029 Projected Population	29,112	152,848	345,453
2020 Census Population	28,159	144,474	327,514
2010 Census Population	27,377	137,306	302,129
Projected Annual Growth 2024 to 2029	-	0.4%	0.6%
Historical Annual Growth 2010 to 2024	0.5%	0.7%	0.8%
2024 Median Age	38.6	38.2	38.8
Households			
2024 Estimated Households	12,781	68,222	147,570
2029 Projected Households	12,886	70,407	153,515
2020 Census Households	12,526	64,613	138,776
2010 Census Households	11,849	59,872	125,797
Projected Annual Growth 2024 to 2029	0.2%	0.6%	0.8%
Historical Annual Growth 2010 to 2024	0.6%	1.0%	1.2%
Race and Ethnicity			
2024 Estimated White	78.3%	77.3%	77.7%
2024 Estimated Black or African American	7.6%	7.5%	6.6%
2024 Estimated Asian or Pacific Islander	4.1%	5.2%	5.8%
2024 Estimated American Indian or Native Alaskan	0.3%	0.3%	0.3%
2024 Estimated Other Races	9.6%	9.8%	9.6%
2024 Estimated Hispanic	10.1%	9.9%	9.8%
Income			
2024 Estimated Average Household Income	\$114,346	\$116,208	\$128,187
2024 Estimated Median Household Income	\$91,047	\$91,930	\$101,689
2024 Estimated Per Capita Income	\$50,279	\$53,015	\$56,399
Education (Age 25+)			
2024 Estimated Elementary (Grade Level 0 to 8)	1.1%	1.6%	1.6%
2024 Estimated Some High School (Grade Level 9 to 11)	1.7%	2.0%	2.0%
2024 Estimated High School Graduate	16.4%	14.9%	15.1%
2024 Estimated Some College	19.3%	19.5%	18.5%
2024 Estimated Associates Degree Only	8.9%	8.5%	7.7%
2024 Estimated Bachelors Degree Only	34.9%	33.5%	33.6%
2024 Estimated Graduate Degree	17.7%	20.0%	21.4%
Business			
2024 Estimated Total Businesses	2,092	7,944	16,469
2024 Estimated Total Employees	39,319	137,674	261,412
2024 Estimated Employee Population per Business	18.8	17.3	15.9
2024 Estimated Residential Population per Business	13.9	18.9	20.4

©2024, Sites USA, Chandler, Arizona, 480-491-1112 Demographic Source: Applied Geographic Solutions 5/2024, TIGER Geography - RS1

